



PENERAPAN AUTOMATION UNTUK KOMPARASI INFORMASI PADA WEBSITE POKEMON

Alvira Puteri | 1873004
Pembimbing : Setia Budi, Ph.D
Tugas Akhir Semester Genap 2020/2021



HASIL PENGUJIAN

Tampilan HTML dari report yang dihasilkan selama pengujian

LATAR BELAKANG

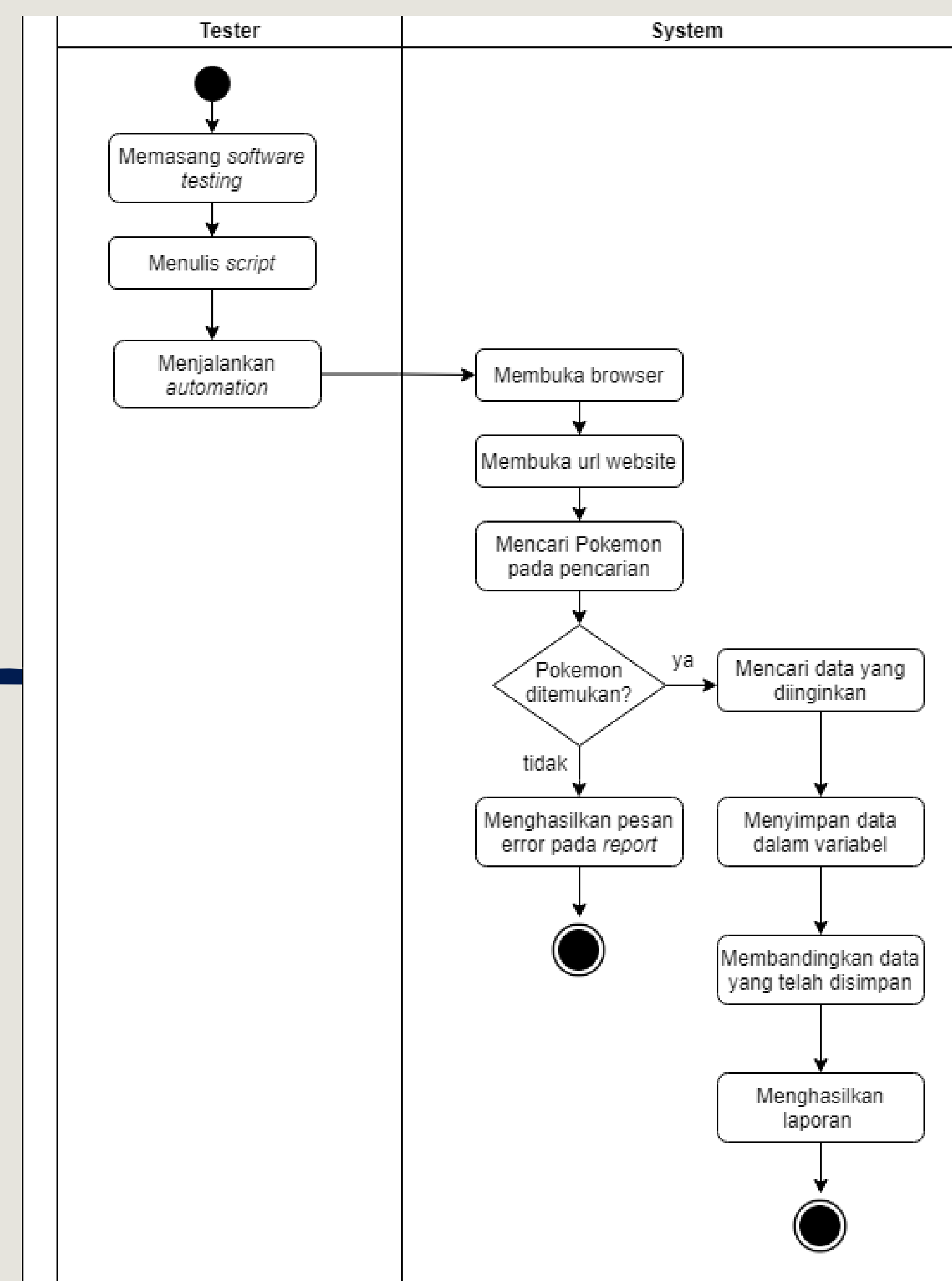
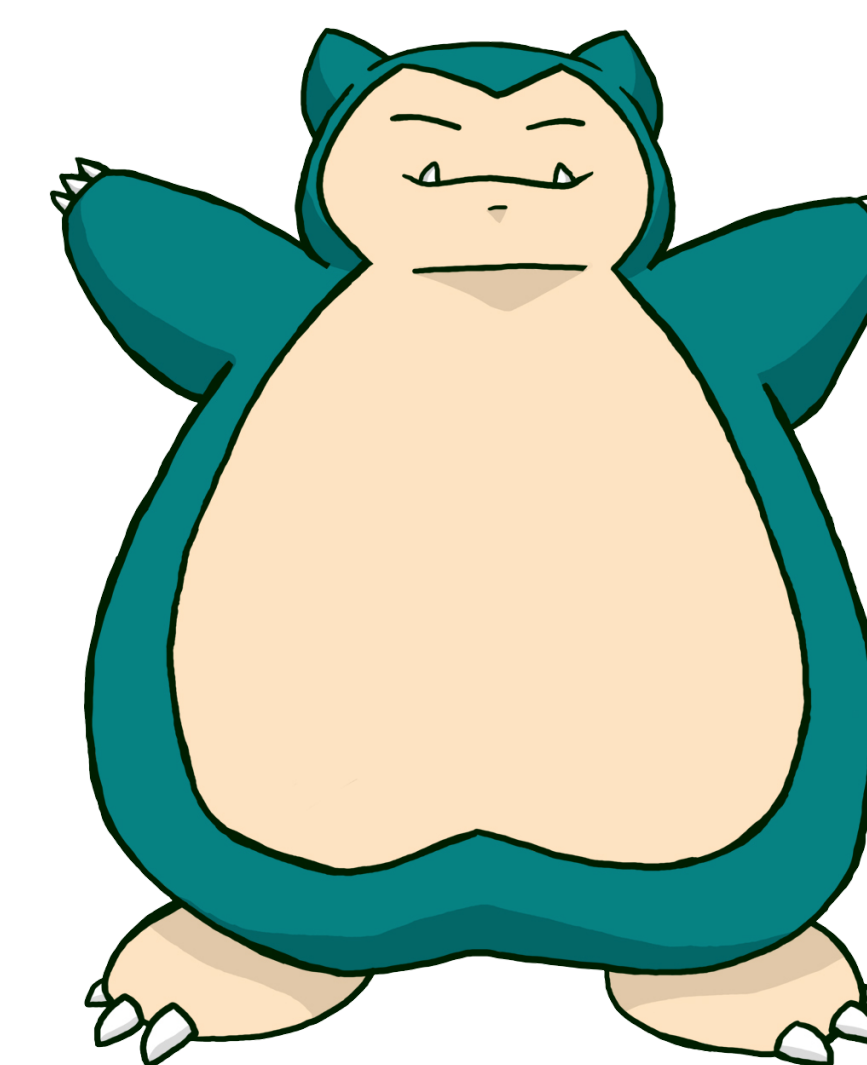
Hingga saat ini, setidaknya 890 Pokemon telah dikonfirmasi dan tidak menutup kemungkinan untuk terus bertambah di masa depan. Karena jumlah Pokemon yang besar, tidak semua spesies Pokemon dapat dikenal dan diingat. Seiring berjalannya waktu, berbagai website yang berisi informasi seputar pokemon mulai bermunculan. Sayangnya, tidak semua website menyajikan informasi yang akurat dan karenanya perlu dilakukan perbandingan terhadap setiap website. Melakukan perbandingan secara manual, dengan membuka satu persatu website dan membandingkan data yang ada, tentu tidak efektif.

TUJUAN

Maka dari itu, penelitian ini akan memfokuskan pada pembuatan automation comparison untuk mempermudah proses analisis perbandingan informasi yang disajikan pada website tersebut.

RANCANGAN

Flowchart berisi gambaran proses automation comparison yang saat ini berjalan



SUMBER DATA

Sumber data yang digunakan dalam penelitian ini didapatkan melalui pengumpulan data dari tiga website yang menjadi studi kasus penelitian

pokemondb.net,
bulbapedia.bulbagarden.net dan pokeapi.co



Allure Behaviors
org.testngAllure.tests.AppTest4.bulbapediaAndPokeApiTest
Passed Data comparison scenario from Bulbapedia and PokeApi websites
Overview History Retries
Severity: normal
Duration: 0 1m 23s
Description: Test Description: Pokemon data comparison test from the Bulbapedia and PokeApi websites
Parameters: arg0: pikachu, browser: Chrome
Execution: Open Bulbapedia website (44s 091m), Go to Bulbapedia search bar and search for pokemon: pikachu (1 parameter, 37s 066m), Go to Bulbapedia pokemon page and store data if pokemon exist (787m), Send request for pokemon: pikachu in PokeApi (1 parameter, 2 attachments, 903m)

Allure Behaviors
org.testngAllure.tests.AppTest4.bulbapediaAndPokeApiTest
Failed Data comparison scenario from Bulbapedia and PokeApi websites
Overview History Retries
The following asserts failed:
Pokemon gururumon doesn't exist in Bulbapedia expected [true] but found [false].
Pokemon gururumon doesn't exist in PokeApi expected [200] but found [404].
Assert failed because pokemon gururumon doesn't exist in Bulbapedia expected [true] but found [false].
Assert failed because pokemon gururumon doesn't exist in PokeApi expected [true] but found [false].
Categories: Product defects
Severity: normal
Duration: 0 47s 221ms
Description: Test Description: Pokemon data comparison test from the Bulbapedia and PokeApi websites
Parameters: arg0: gururumon

Allure Behaviors
org.testngAllure.tests.AppTest4.bulbapediaAndPokeApiTest
Failed Data comparison scenario from Bulbapedia and PokeApi websites
Overview History Retries
The following asserts failed:
Pokemon gururumon doesn't exist in Bulbapedia expected [true] but found [false].
Pokemon gururumon doesn't exist in PokeApi expected [200] but found [404].
Assert failed because pokemon gururumon doesn't exist in Bulbapedia expected [true] but found [false].
Assert failed because pokemon gururumon doesn't exist in PokeApi expected [true] but found [false].
Categories: Product defects
Severity: normal
Duration: 0 47s 221ms
Description: Test Description: Pokemon data comparison test from the Bulbapedia and PokeApi websites
Parameters: arg0: gururumon

Allure Behaviors
org.testngAllure.tests.AppTest4.bulbapediaAndPokeApiTest
Failed Data comparison scenario from Bulbapedia and PokeApi websites
Overview History Retries
The following asserts failed:
Pokemon gururumon doesn't exist in Bulbapedia expected [true] but found [false].
Pokemon gururumon doesn't exist in PokeApi expected [200] but found [404].
Assert failed because pokemon gururumon doesn't exist in Bulbapedia expected [true] but found [false].
Assert failed because pokemon gururumon doesn't exist in PokeApi expected [true] but found [false].
Categories: Product defects
Severity: normal
Duration: 0 47s 221ms
Description: Test Description: Pokemon data comparison test from the Bulbapedia and PokeApi websites
Parameters: arg0: gururumon